

Health Disability Sport Pathway

Betsi Cadwaladr University Health Board and
Disability Sport Wales

Catherine Chin | Health Disability Sport Officer
(BCUHB)

Michelle Daltry | Partnership Manager
(DSW)



working in partnership with | yn gweithio mewn partneriaeth â



GIG
CYMRU
NHS
WALES

Bwrdd Iechyd Prifysgol
Betsi Cadwaladr
University Health Board

Background

- Currently engage with 3.4% of the disabled population in North Wales
- Increase levels of physical activity and decrease need for health intervention
- Little formal relationship between Health and Sport outside of NERS
- Shared aim to improve the health and active lifestyle of disabled people



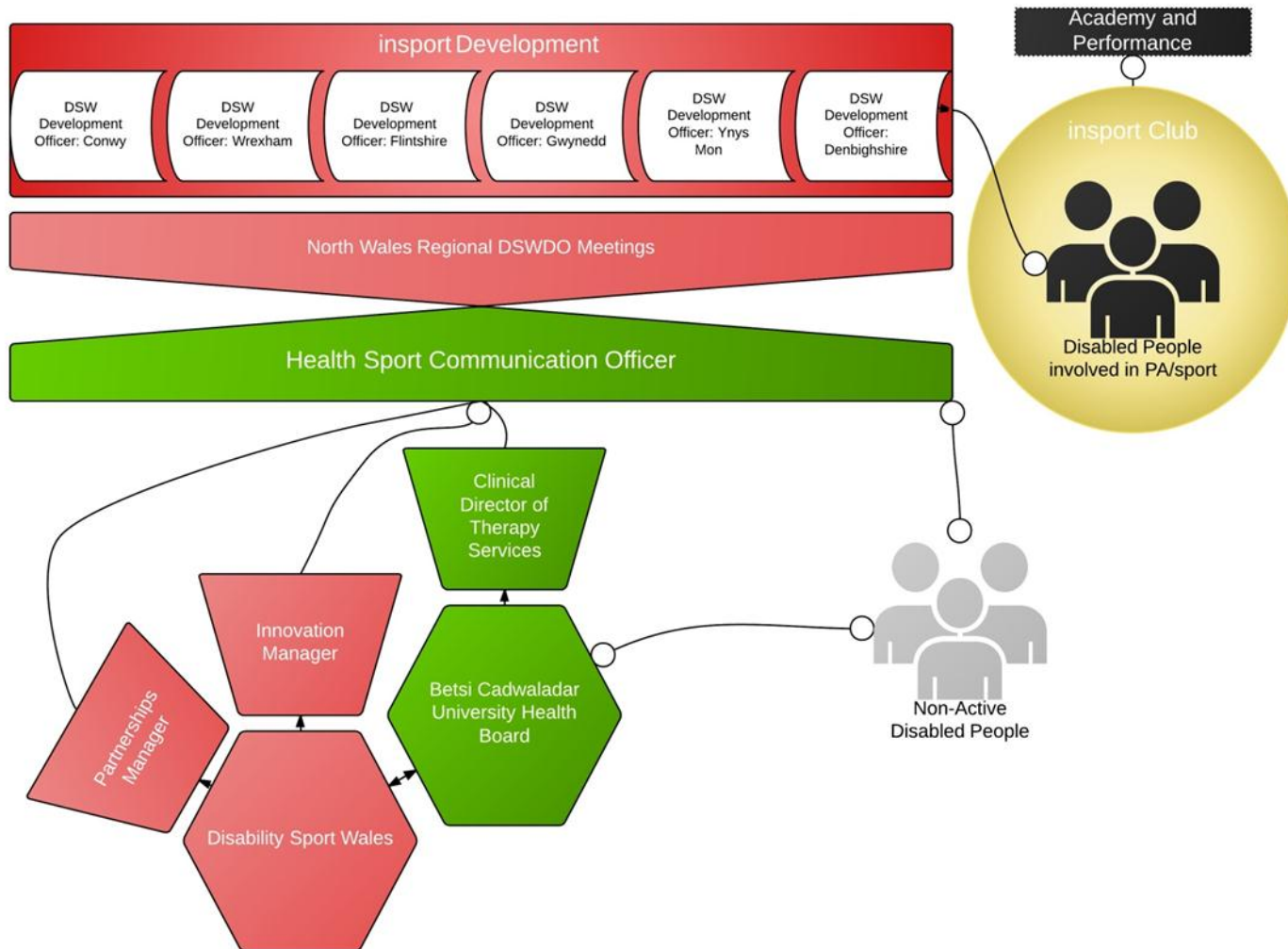
working in partnership with yn gweithio mewn partneriaeth â



GIG
CYMRU
NHS
WALES

Bwrdd Iechyd Prifysgol
Betsi Cadwaladr
University Health Board

Outline of project



TY CHWARAEON
ST ANABLEDD
S CYMRU

weithio mewn partneriaeth â

vrdd Iechyd Prifysgol
Betsi Cadwaladr
University Health Board

Key outcomes

- Strong and sustainable partnership
- Up-skill 7% of the BCUHB workforce
- 12 Health Disability Sport Champions at year 3
- To increase numbers of physically active disabled people from 3% to 6% (8602 individuals)
- To improve health and active lifestyle – footfall through leisure rather than health
- Identify 5 performance athletes



working in partnership with yn gweithio mewn partneriaeth â



GIG
CYMRU
NHS
WALES

Bwrdd Iechyd Prifysgol
Betsi Cadwaladr
University Health Board

Learning so far

Challenges

- Access to Baseline data regarding numbers of disabled people
- Monitoring the impact of signposting
- Establishing communication systems in such a large organisation

Successes

- 220 individuals signposted
- 1 performance athlete identified
- 510 health professionals up-skilled



working in partnership with | yn gweithio mewn partneriaeth â



GIG
CYMRU
NHS
WALES

Bwrdd Iechyd Prifysgol
Betsi Cadwaladr
University Health Board

Case Study: Successful projects so far

<http://www.bbc.co.uk/news/uk-wales-31445875>



working in partnership with yn gweithio mewn partneriaeth â



GIG
CYMRU
NHS
WALES

Bwrdd Iechyd Prifysgol
Betsi Cadwaladr
University Health Board

Questions?



working in partnership with | yn gweithio mewn partneriaeth â



GIG
CYMRU
NHS
WALES

Bwrdd Iechyd Prifysgol
Betsi Cadwaladr
University Health Board