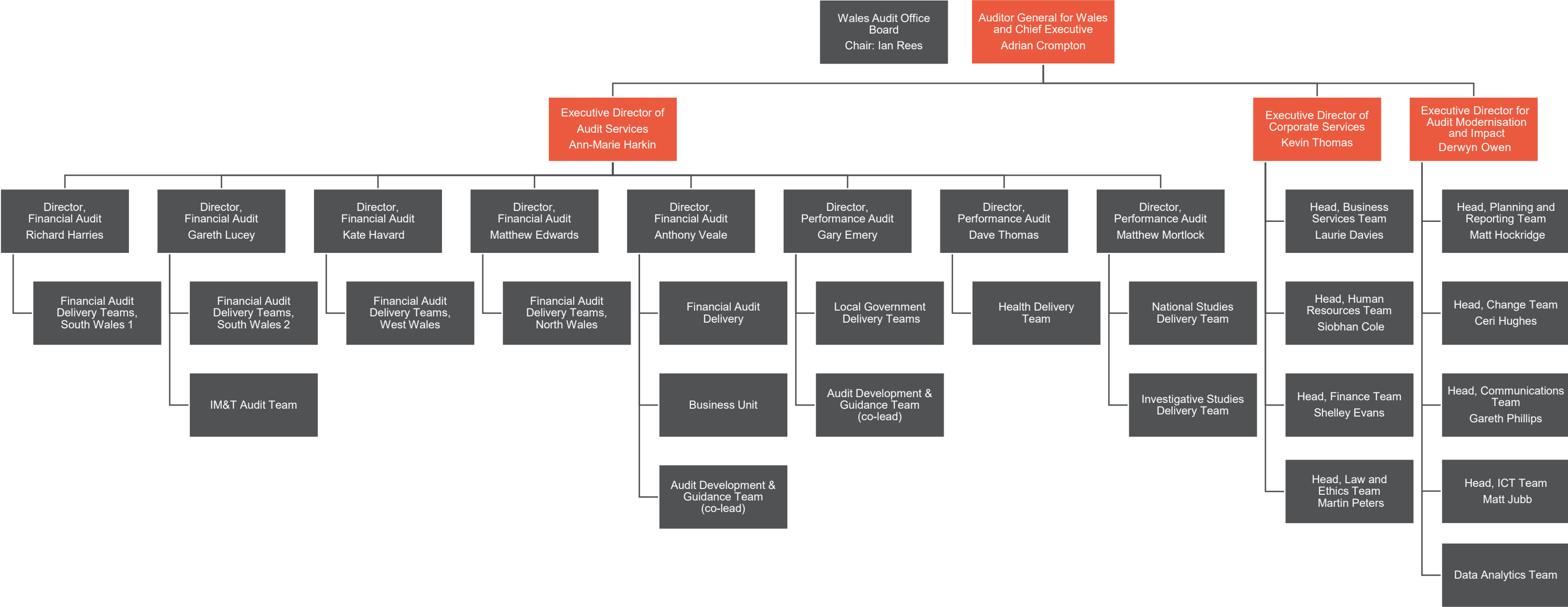


# Audit Wales organisation chart



Notes:

- The Auditor General and Executive Directors collectively form the Executive Leadership Team (highlighted in orange).
- The Auditor General for Wales only reports to the Board in his role as Chief Executive of the Wales Audit Office. However, the Board monitors the exercise of the Auditor General's functions and provides the Auditor General with advice.